

**mineheart**

*Eccentric British Design*

made in England

14/02



## **CLOCK PLATE CLOCK**

Design by Young & Battaglia  
Made in England

Large "LONDON": diameter 270mm  
Medium "PARIS": diameter 210mm  
Small "NEW YORK": diameter 170mm

Glazed porcelain plates with printed images of vintage clocks designed to be hang on the wall. Made in England with high quality German Quartz movement.



## POETRY PLATES

Design by Young & Battaglia  
Made in England

Large: diameter 270mm

Medium: diameter 210mm

Small: diameter 170mm

Fine bone china plates with gold lustre edging and blue text.

Large: "I love the way you look at me, and the way you use your knife. I love the way you eat your food, you give meaning to my life."

Medium: "I am nothing but a simple plate, porcelain skin painted gold and blue. I am not a poet, just a dish, but I'll leave that judgement up to you."

Small: "A little bit on the side."





## UNDERCOVER ANTIQUES

Design by Young & Battaglia  
Made in England

Where graffiti collides with the china cabinet:  
familiar scenes reveal themselves through  
spattered windows on understated glossy white  
ceramic forms. Afternoon tea will never be the  
same again!

Plates

Large: diameter 270mm

Medium: diameter 210mm

Small: diameter 170mm



**“DELFT” CERAMIC BULLDOG**

Design by Young & Battaglia

Large: 350mm W x 290mm H x 150mm D

Decorative ceramic bulldogs introduce a modern and playful twist to the classically patterned china crockery that they take their inspiration from.

Made in glossy white ceramic glaze with blue floral transfers and crisp gold lustre detailing.





## MAGIC MAGNETIC FEATHERS

Design by Young & Battaglia  
Made in England

White set: x5 feathers length 130 - 200mm  
Black set: x5 feathers length 130 - 200mm  
Woodland set: x5 feathers length 130 - 300 mm

Sold in a sets of 5, they are available in either all white, black or a mixture of woodland feathers that include a pheasant, guinea fowl and a black goose feather.

The magnetic feathers can either be used to attach directly to any already magnetic surface such as a fridge door, or can be used on any wall using the self adhesive metal discs supplied.





### “BISON” LEATHER STAG HEAD SKULL

Design by Young & Battaglia  
Made in England

Dimensions: 540mm x 350mm x 20mm  
Colour: Conker Brown

The ‘Bison’ Leather Stag Head Skull is a new take on the Japanese art of origami but using leather instead of paper. Made from uncoated, vegetable tanned leather, this product contains natural imperfections and will age gracefully. Supplied flat, it is assembled from 2 pieces that cleverly tuck and fold together.



### COWHIDE MOUSEMAT

Design by Young & Battaglia  
Made in England

Dimensions: 250mm x 275mm x 2mm  
Colour: Conker Brown

Made from soft vegetable tanned leather, and inspired by the shape of cow hide rugs these iconic mats celebrate the natural imperfections of leather and will age gracefully.



## MYSTERY CUSHIONS

Design by Chad Wys in collaboration  
with Young & Battaglia  
Made in England

Dimensions: 450mm x 450mm

These digitally printed cushions feature four portrait images, each altered in a surreal and arresting way. All are printed in England on cotton satin, backed with black cotton and with feather filled pads.

From the left:  
"General Mustard"  
"Lady Peacock"  
"Tom Green"  
"Lord White"





## SEWN CHERUBS & SEWN CROCHET CUSHIONS

Design by Mineheart  
Made in England

Dimensions: 450mm x 450mm  
Printed in England on cotton satin.  
Feather filled pads.

Designed to give the illusion of layered fabrics and textures. You can't help but touch this cushion, hoping to feel the frays.





### ARTISTIC CUSHIONS: GREY & PINK

Design by Mineheart  
Made in England

Dimensions: 450mm x 450mm  
Printed in England on cotton satin.  
Feather filled pads.

It's hard to know when you've finished your painting but we think we've cracked it. This classic wooded landscape has been altered in a characteristically irreverent fashion.





### “CUSHIONA OBSCURA” COLLECTION

Design by Chad Wys in collaboration  
with Young & Battaglia  
Made in England

Dimensions: 450mm x 450mm  
100% cotton satin, with concealed zip and feather pad.

#### “BLINK”

Textured circles bring animation to this pensive scene, inviting admiring and quizzical glances. Designed exclusively for mineheart by the artist Chad Wys.

#### “GLIMPSE”

Parallel lines or bars? Hiding or being constrained? This retiring lady would grace any interior, contemporary or traditional. Limited edition of 50 only.

#### “PEEP”

Combining ceramic art and fine art, this image invites closer inspection. A covetable accessory straddling the line between expression and convention. Limited edition of 50 only.

#### “SPY”

Semi opaque strips only partially mask the hectic scene. Playful and animated, this desirable home accent piece blurs the line between tradition and the new. Limited edition of 50 only.



### **“MADAME BLUSH” CANVAS**

Made in England

Extra Large: 1730mm x 1370mm x 40mm

Large: 1270mm x 1000mm x 40mm

Small: 810mm x 660mm x 40mm

This canvas portrays a cheekily defaced French queen, blending classic art with modern day mischief. The ornate, white frame is not as it seems; in fact it's printed onto the canvas.



Design by Chad Wys in collaboration with Mineheart  
Made in England

American Artist Chad Wys plays with our perception of art with his revisitation of classic masters paintings. He creates a new aesthetic-emotional experience with a careful new composition of colour and seemingly destructive strokes. Whether you see it as vandalism or an loveable new way of blending past and present, it asks the question 'what does the creation of new meaning tell us about old meanings, or meanings in general?'

Extra Large: 1730mm x 1370mm x 40mm  
Large: 1270mm x 1000mm x 40mm  
Small: 810mm x 660mm x 40mm

#### **"PORTRAIT OF A LADY" CANVAS**

'Portrait of a lady' features a brutalized Gainsborough painting in a frame. Both the frame and the images are printed on to the canvas.

#### **"PORTRAIT OF A GENTLEMAN" CANVAS**

'Portrait of a gentleman' features an image brutalized portrait of Napoleon mounted backwards in an old picture frame complete with woodworm and nails. Both the frame and the artwork are printed on to the canvas.



Design by Himitsuhana in collaboration with Mineheart  
Made in England

Image and frame are digitally printed onto the finest quality canvas.

Extra Large: 1730mm x 1370mm x 40mm

Large: 1270mm x 1000mm x 40mm

Small: 660mm x 810mm x 40mm

#### “AIR”

This beautiful print, reminiscent of classic Dutch Old Master paintings, is of a woman drinking from a large glass of purest swirling air.

#### “RAPUNZEL”

‘Rapunzel’ depicts an imprisoned young lady gazing longingly at the outside world, her beautiful, flowing, long red hair catching the rays of sunlight that shine through the window. The piece is inspired by the beautiful paintings of the Italian and Dutch renaissance.

#### “SEA”

This fascinating print, reminiscent of classic Dutch Master paintings, is of an innocent young girl who looks to have been captivated by the sea.





## “MEET THE ANIMAL ANCESTORS” CANVASES

Design by Angela Rossi in collaboration with Mineheart

Darwinian double-take: Create your own family gallery with these quirky gents, who regard you from their canvas-printed frames with regal bearing and military might. The portraits are a happy marriage between Angela Rossi and mineheart's imaginations and are sure to fit with any interior scheme with a sense of humour.

Dimensions: 660mm x 810mm x 40mm  
Image and frame are digitally printed onto the finest quality canvas.

Stag - “Brother Stanwick”

Walrus - “Uncle Walter”

Owl - “Grandfather Olaf”

Parrot - “Cousin Parker”



### **“SENORA EMANUELA” CANVAS**

Design by Angela Rossi in collaboration with Mineheart  
Made in England

Extra Large: 1730mm x 1370mm x 40mm

Large: 1270mm x 1000mm x 40mm

Small: 810mm x 660mm x 40mm

Image and frame are digitally printed onto the finest quality canvas.





**“ICE QUEEN”  
OUTDOOR LED CHANDELIER**

Design by Mineheart  
Made in England

Dimensions: 470mm x 470mm x 400mm

This 12V chandelier has 5 replaceable ultrabright LED bulbs and has been almost completely coated in clear frosted rubber to make it waterproof and give it an icy, frosted look. These lamps can be hung from trees or from garden structures. Supplied with a 10 meters long power cable and indoor plug.



## **SPAGHETTI PRINCESS CHANDELIER**

Design by Young & Battaglia

Made in England

Small 6 arm: W650mm x H800mm approx

Large 8 arm: W1000mm x H1500mm approx

The inspiration came from the beautiful chandeliers of the 17th century Baroque era. Spaghetti Princess Chandelier captures an essence of their silhouette and feeling of continuous movement using the electric flex itself. It is available in either Black or White and supplied with +3 meters long hanging chain and flex.

This product does not include light bulbs or ceiling plate.



## **BIRDCAGE LAMP**

Design by Mineheart  
Made in England

Dimensions: diameter 600mm  
Finish: white powder coated steel

This lighting can be used as a hanging lamp or a floor lamp.



## KING EDISON PENDANT LAMP

Design by Young & Battaglia

Dimensions: 150mm D x 210mm H

For use with a 5 volt power supply, (transformer included).

Supplied with a 2 metre woven cable and ceiling rose.

Small is beautiful meets a moment of genius, a perfect tiny chandelier suspended inside a glass lightbulb and hung on woven silken cable. The 'King Edison' pendant lamp designed by Young & Battaglia, combines the pure simplicity of an Edison light bulb with the romance and glamour of a Kings chandelier. It consists of a miniature brass chandelier inside a hand blown clear glass shade. Fittings available in satin chrome or brass. Ideal for hanging individually or in clusters for maximum effect.





### **SISTINE PENDANT LIGHT**

Design by Himitsuhana in collaboration with Young & Battaglia  
Made in England

Dimensions: diameter 700mm x 200mm

The 'Sistine' pendant light is inspired by frescos and chapel ceilings. An elegantly proportioned circular shade supports a diffuser featuring an image of 3 sisters floating in the sky around a dove. The halo of light around the dove is positioned directly below the light source so that when the light is on, the light emanates from the dove.



## CANDELA WALL LIGHT

Design by Himitsuhana in collaboration with Young & Battaglia  
Made in England

Dimensions: diameter 350mm x 100mm

The 'Candela' wall light is a simple circular shade made using traditional lampshade making techniques of fabric stretched over a steel frame. The front diffuser features an image of a girl lit by candle light, and is designed to give the feeling of soft, romantic candlelight. The candle flame is cleverly positioned directly in front of the light source so that when the light is on, the light emanates from the flame.



## **BLUE SKY SHADE & STORMY SKY SHADE**

Design by Mineheart

Made in England

Dimensions:

diameter 600mm x 280mm

diameter 400mm x 400mm

Bring the sky inside with these handmade shades with images of clouds and edging detail.



## LOTUS FOLDING LAMPSHADE

Design by Young & Battaglia  
Made in England

Dimensions: 300mm H x 280mm W  
Bulb not included. Max 15 Watt low energy bulb.  
Available in black or cream.

Made from one sheet of natural felt, the Lotus lampshade uses no wires or support except itself. Easy to assemble the shade comes folded flat with installation instructions. The inspiration from Japanese Origami flowers uses the same elegant language translated into fabric. As in Origami, the object is made from one single sheet of fabric, folded and tucked, no glue is used.





## **ROCKING LAMP**

Design by Young & Battaglia  
Made in England

Dimensions: diameter 300 x 450mm

The Rocking Lamp is hand made in England by traditional wood turners and lampshade makers. It comes in a 45cm high table lamp size. The base is made from solid beech and the shade is finished in white cotton.



## SUSPENDED STATUARY PENDANT LAMPS

Design by Young & Battaglia  
Made in England

Dimensions:

Hero 350mm H

Muse 380mm H

Goddess 350mm H

12V transformer and MR11 LED warm white bulb supplied.

Dignified classical stone busts drop from braided cable, poised to lend an air of tongue-in-cheek grace to interiors old and new. Impactful in clusters or dignified as a solo piece, these come in a choice of three designs, "Goddess", "Hero" and "Muse".

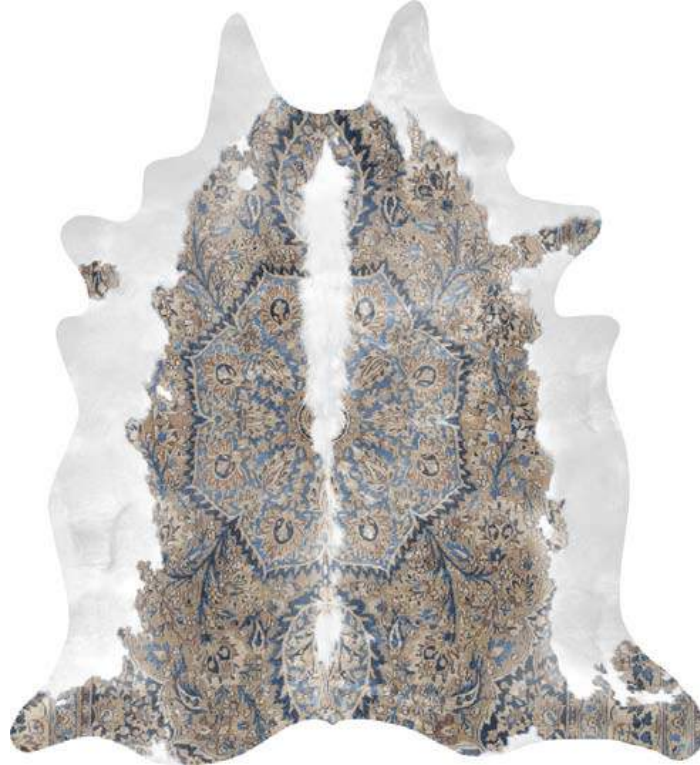


### RENAISSANCE COWHIDE RUG

Design by Himitsuhana in collaboration with Young & Battaglia  
Made in England

Dimensions: 1653mm x 1500mm

This piece features a background image created by artist Himitsuhana, overlaid with printed tufts of fur and hand cut out in a special rubber backed fabric. It is hypo-allergenic, washable, non-slip, and will not curl up at the edges.



## **PERSIAN COWHIDE RUG**

Design by Young & Battaglia  
Made in England

Dimensions: 1653 x 1500mm

The meticulous and geometric Persian carpet is seamlessly combined with the natural irregularity of an animal skin rug. The design is made possible by digitally printing on to a special rubber backed fabric which is then hand cut into its final hide shape. It is hypo-allergenic, washable, non-slip, and will not curl up at the edges.

Available in blue, black and grey.



## **SUPER LONG PERSIAN COWHIDE RUG**

Design by Young & Battaglia  
Made in England

Dimensions: 3300 x 1500mm

The meticulous and geometric Persian carpet is seamlessly combined with the natural irregularity of an animal skin rug. The design is made possible by digitally printing on to a special rubber backed fabric which is then hand cut into its final hide shape. It is hypo-allergenic, washable, non-slip, and will not curl up at the edges. Available in grey.



### **SUPER LONG STRETCHED COWHIDE RUG**

Design by Young & Battaglia  
Made in England

Extra Large: 3800mm x 1300mm  
Medium: 3100mm x 1060mm  
Small: 2400mm x 825mm

The high quality photographic image has been modified from a real cowhide, thus even the individual hairs of the fur are visible. Digitally printed onto a special rubber backed fabric which is then hand cut into its final hide shape. It is hypo-allergenic, washable, non-slip, and will not curl up at the edges. Available in natural or bleached.





## PASTORAL RUG

Design by Chad Wys in collaboration with Young & Battaglia  
Made in England

Large: 1500 x 2130 mm

Medium: 1200 x 1700 mm

The poetic image is stretched and melted, as if on a piece of parchment from a bygone age. Digitally printed onto a special rubber backed fabric which is then hand cut in to its final shape. It is hypo-allergenic, washable, non-slip, and will not curl up at the edges.



### **GEORGE ARIES ESQ. RUG**

Design by Angela Rossi in collaboration with Mineheart  
Made in England

Dimensions: 1500 x 1500mm

This rug has been created in collaboration with artist who works with recycled items creating altered antique plates. Digitally printed onto a special rubber backed fabric which is then hand cut into its final shape. It is hypo-allergenic, washable, non-slip, and will not curl up at the edges.





## **MILKING STOOL**

Design by Young & Battaglia  
Made in England

Dimensions: 400mm W x 450mm H

These stools have familiar and charming proportions which are based on traditional rustic milking stools. Its ultra-simple friendly shape has been hand lathed from beech wood, and are available in a gold leaf finish.



## NEW CASABLANCA TABLES

Design by Young & Battaglia  
Made in England

Tall: 570mm H  
Medium: 470mm H  
Short: 370mm H  
Tray sizes: diameter 280mm - 380mm

Marrakesh meets modernity.  
Reclaimed and vintage serving trays, handpicked from markets and antique shops, fixed on solid steel legs with either powder coated, brass or chrome plated finish.

Other leg colours can be made on request.  
Trays available in brass or silver finish.





### SHABBY CHIC SOFA

Design by Young & Battaglia

Made in England

Dimensions:

1210mm W x 600mm D x 1110mm H

Putting shabby-chic onto a brand new seat. This sofa gives the illusion of layered fabrics. Digitally printed in the UK the fabric shows a range of textures and patterns on single piece, which is then upholstered to a wooden frame.

(There are no real frays or tears on this piece).



### MISS CHESTER BENCH

Design by Young & Battaglia  
Made in England

Large: 300mm H x 500mm D x 1400mm W  
Medium: 200mm H x 500mm D x 900mm W  
Small: 400mm H x 500mm D x 600mm W

These hand made button-back benches are a modern twist on sofas found in a stuffy gentleman's club. The dimensions of each piece vary in height and length and are available in various colours and materials. Custom colour feet can be made on request.





## MISS CHESTER SOFA

Design by Young & Battaglia  
Made in England

Dimensions: W 2000mm x D 800mm  
Back rest: H 300 mm

These hand made button-back sofas are a modern twist on those found in a stuffy gentleman's club. Available in various colours and finishes. Custom colour feet can be made on request.



## ELIZABETH CABINET

Design by Young & Battaglia  
Made in England

Dimensions:  
820mm H x 1200mm W x 450mm D

Materials:  
MDF, satin black finish, push-pull opening

Hand made in England, this minimal black cabinet whispers 'regality'. Contrasting the beautiful, crisp detail of Elizabethan style with modern minimalism, this cabinet complements any surrounding. The elegance is reflected in the use of the sleek handle-less doors and satin finish. One shelf inside.





### MARIA CABINET

Design by Young & Battaglia  
Made in England

Dimensions: 1400mm H x 700mm W x 350mm D

Legs: 320mm H

Materials:

MDF, satin black finish, push-pull opening

Composed refinement: A hint of a smile from this ermine-clad damsel. Every inch of her intricate attire is faithfully and digitally reproduced on this tall cabinet, ideal as a small wardrobe or drinks cabinet. Black satin finish, touch catches and two shelves inside.



### CATHERINE SIDE TABLE

Design by Young & Battaglia  
Made in England

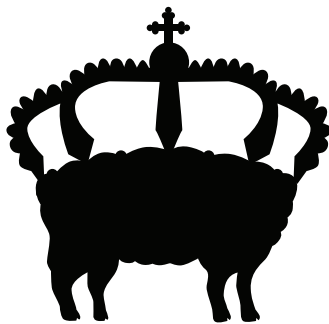
Dimensions: 700mm H x 380mm W x 320mm D

Legs: 320mm H

Materials:

MDF, satin black finish, push-pull opening

The stately profile of a pale stunner, resplendent in all her bejewelled finery, with scarlet cupid's bow and ready for the masquerade, adorns the Catherine Cabinet. Black satin finish, touch catches and one shelf inside.



# mineheart

WALLPAPERS

made in England

14/02





## WHITE AND BLACK BOOKSHELF WALLPAPER

Design by Young & Battaglia  
Made in England

### Specifications:

500 x 2500mm

Pattern alignment: 208mm (any shelf matches up with any other shelf)

Actual pattern repeat 624mm

300g textured fabric backed vinyl

### Use:

Domestic / Commercial



## VINTAGE BOOKSHELF WALLPAPER

Design by Young & Battaglia  
Made in England

Specifications:  
500 x 2500mm  
Shelf height: 208mm (any shelf matches up with any other)  
Actual pattern repeat 624mm  
300g textured fabric backed vinyl

Use:  
Domestic / Commercial



## DARK, SEPIA AND PHOTOCOPY BOOKSHELF WALLPAPER

Design by Young & Battaglia

Made in England

Specifications:

500 x 2500mm

Pattern alignment: 208mm (any shelf matches up with any other shelf)

Actual pattern repeat 624mm

300g textured fabric backed vinyl

Use:

Domestic / Commercial



## PICTURE FRAME WALLPAPER

Design by Young & Battaglia  
Made in England

### Specifications:

Standard roll size 500 x 2500mm  
Pattern repeat 624mm  
300g textured fabric backed vinyl

### Use:

Domestic / Commercial



Anthracite



Amethyst



Petrol



Grey & Rose



Grey & Turquoise



Grey & Marine

## PANELLING WALLPAPER

Design by Young & Battaglia  
Made in England

Specifications:  
500 x 2500mm  
Pattern repeat 473mm approx.  
300g textured fabric backed vinyl

Use:  
Domestic / Commercial



## **WHITE PLANK WALLPAPER**

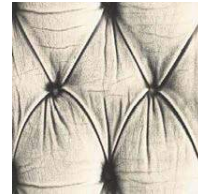
Design by Young & Battaglia  
Made in England

Specifications:  
500 x 2500mm  
Pattern repeat 699mm approx.  
300g textured fabric backed vinyl

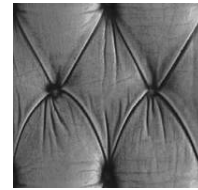
Use:  
Domestic / Commercial



Black



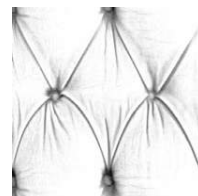
Cream



Grey



Red



White



Pink

## CHESTERFIELD WALLPAPER

Design by Young & Battaglia  
Made in England

Specifications:  
500 x 2500mm  
Pattern repeat 292mm  
300g textured fabric backed vinyl

Use:  
Domestic / Commercial



mineheart  
WALLPAPERS



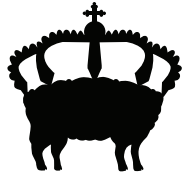
## CAST IRON WALLPAPER

Design by Young & Battaglia  
Made in England

Specifications:  
500 x 2500mm  
Pattern repeat 987mm  
300g textured fabric backed vinyl

Use:  
Domestic / Commercial





**mineheart**  
WALLPAPERS



## **WROUGHT METAL GATE WALLPAPER**

Design by Young & Battaglia  
Made in England

### Specifications:

500 x 2500mm

Pattern repeat 985mm

300g textured fabric backed vinyl

### Use:

Domestic / Commercial



## STONE ANGELS WALLPAPER

Design by Young & Battaglia  
Made in England

Specifications:  
900 x 2500mm  
Finest quality smooth paper

Use:  
Domestic





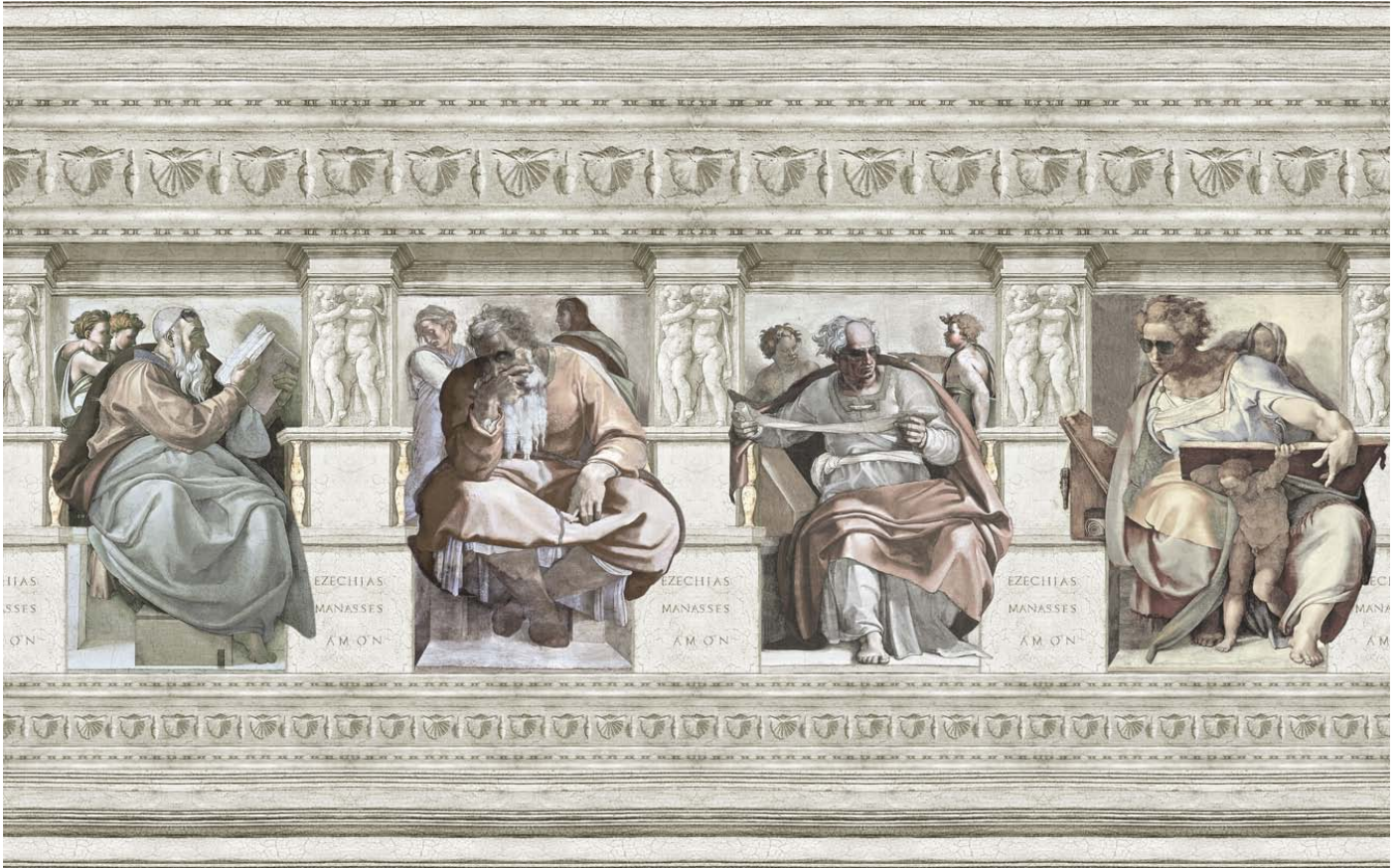
## IN THE CLOUDS WALLPAPER

Design by Young & Battaglia  
Made in England

Specifications:  
900 x 2500mm  
Finest quality smooth paper

Use:  
Domestic





## FRESCO WALLPAPER MURAL

Design by Mineheart  
Made in England

Specifications:  
Made to measure  
300g textured fabric backed vinyl

Use:  
Domestic / Commercial





## **PALACE WALLPAPER MURAL**

Design by Young & Battaglia

Made in England

Specifications:

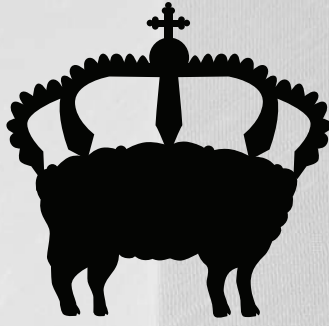
Made to measure

300g textured fabric backed vinyl

Use:

Domestic / Commercial





# mineheart

autumn collection 2014

made in England



14/03



### **AMORETTO TABLE LAMP YELLOW & NATURAL**

Design by Young & Battaglia  
Made in England

**Dimensions:**

Shade width 256mm

Lamp height 450mm

Base: cast with marble and stone dust

Shade: natural dupion

Maximum 100Watts, E27 bulb (not included)

Captured in quiet contemplation, this perfect putto reads beneath a gentle light. The marble dust finish hints at the cherub's antique origins yet this is a thoroughly modern masterpiece. Ideal in as a feature in an eclectic bedroom.



## **WATERLOO TABLE LAMP NATURAL, BLACK & PINK**

Design by Young & Battaglia  
Made in England

### Dimensions:

Shade width 256mm

Lamp height 440mm

Base: cast with marble and stone dust

Shade: natural dupion / black dupion

Maximum 100Watts, E27 bulb (not included)

Irreverently channelling the grandeur of the noble bust, this insouciant lamp celebrates Napoleon – the little general. He is both haughty and heroic but, juxtaposed with a silky shade, amusing in the extreme. A perfect sitter for the bedside table in an eclectic interior scheme.





## **GYPSY COWHIDE RUG WHITE, NAVY & PURPLE**

Design by Young & Battaglia

Made in England

Dimensions: 1500x1653mm

Thickness: 2mm

Materials: rubber backed fabric

Mimicking the shape and texture of cowhide (but without harming any beasts), it's part Mongolian, part Gypsy and 100% glamour. The design is made possible by digitally printing the floral pattern on to a special fabric backed rubber which is the hand cut in to its final hide shape. Unlike real cowhides this one is hypo-allergenic, washable, non-slip, and will not curl up at the edges.



**mineheart**  
WALLPAPERS



## **URBAN CONCRETE DAMASK WALLPAPER**

### **DARK & LIGHT**

Design by Young & Battaglia

Made in England

#### Specifications:

900 x 2500mm

Pattern details: 833mm pattern alignment, 2500mm pattern repeat

180g smooth paper

#### Use:

Domestic



**mineheart**  
WALLPAPERS



## **DRIFTWOOD DAMASK WALLPAPER**

### **LIGHT & DARK**

Design by Young & Battaglia

Made in England

Specifications:

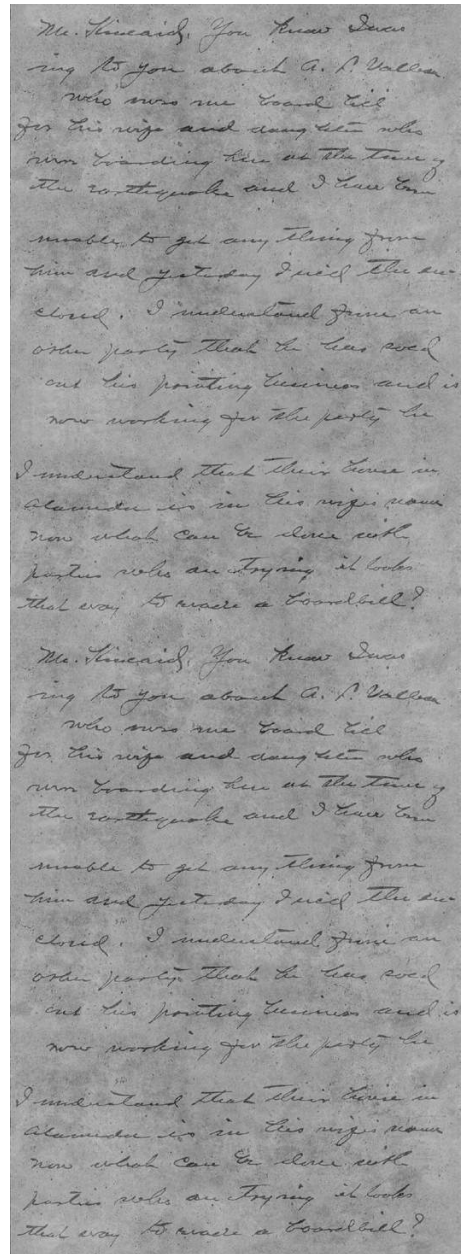
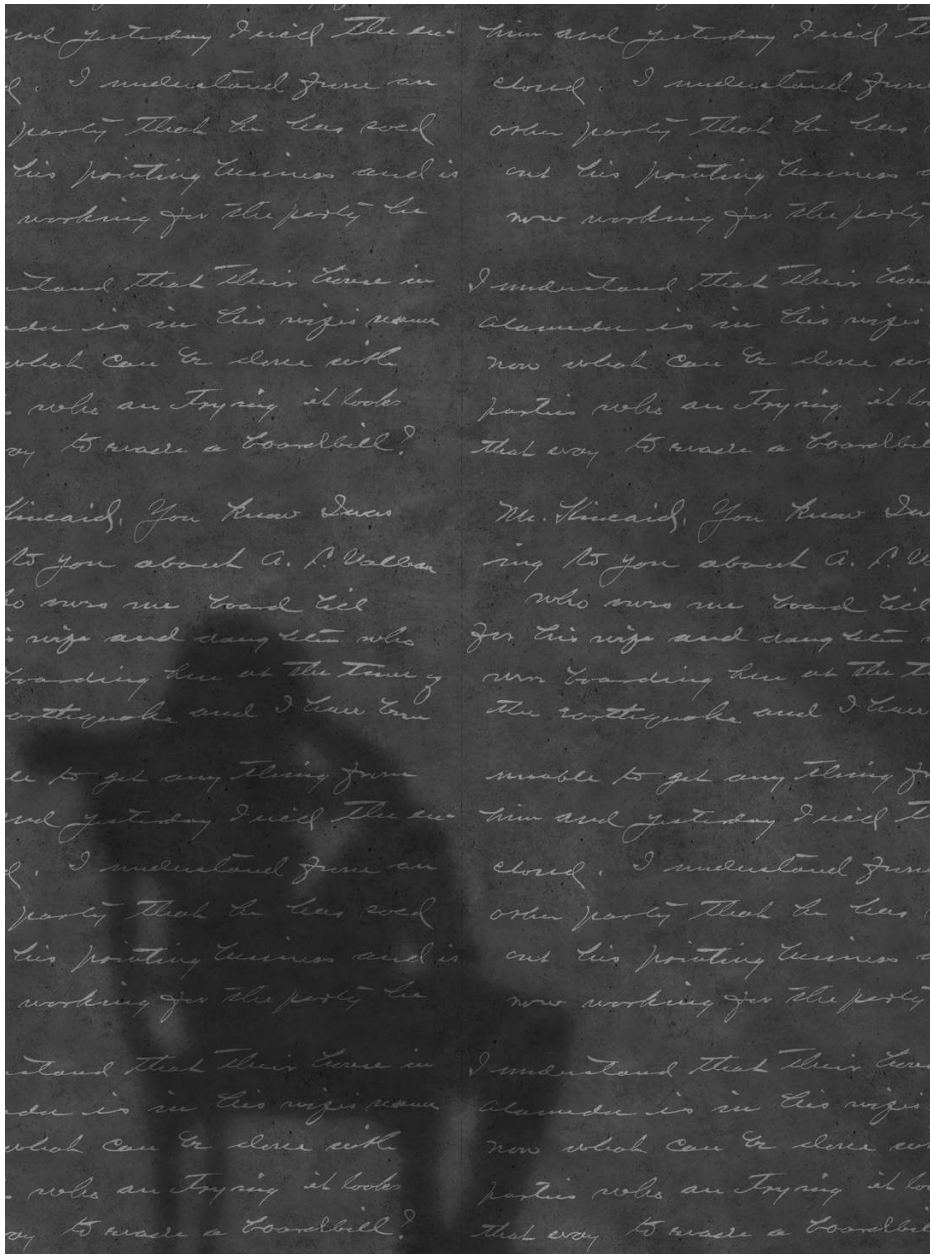
900 x 2500mm

Pattern details: 833mm pattern alignment, 2500mm pattern repeat

180g smooth paper

Use:

Domestic



## CONCRETE LOVELETTER WALLPAPER

### DARK & LIGHT

Design by Young & Battaglia

Made in England

#### Specifications:

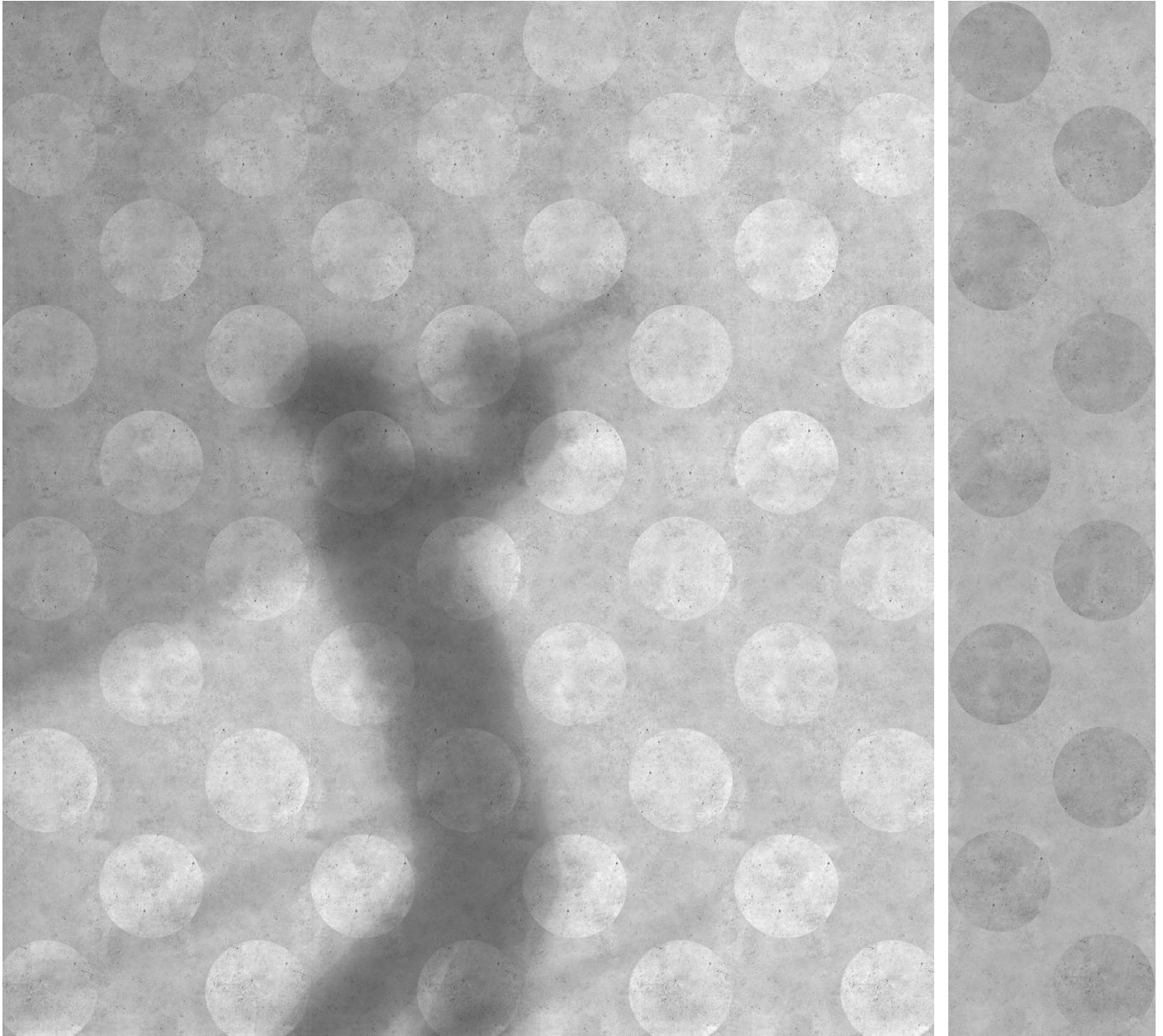
900 x 2500mm

Pattern details: universal alignment (alignment is not limited by the pattern repeat)

180g smooth paper

#### Use:

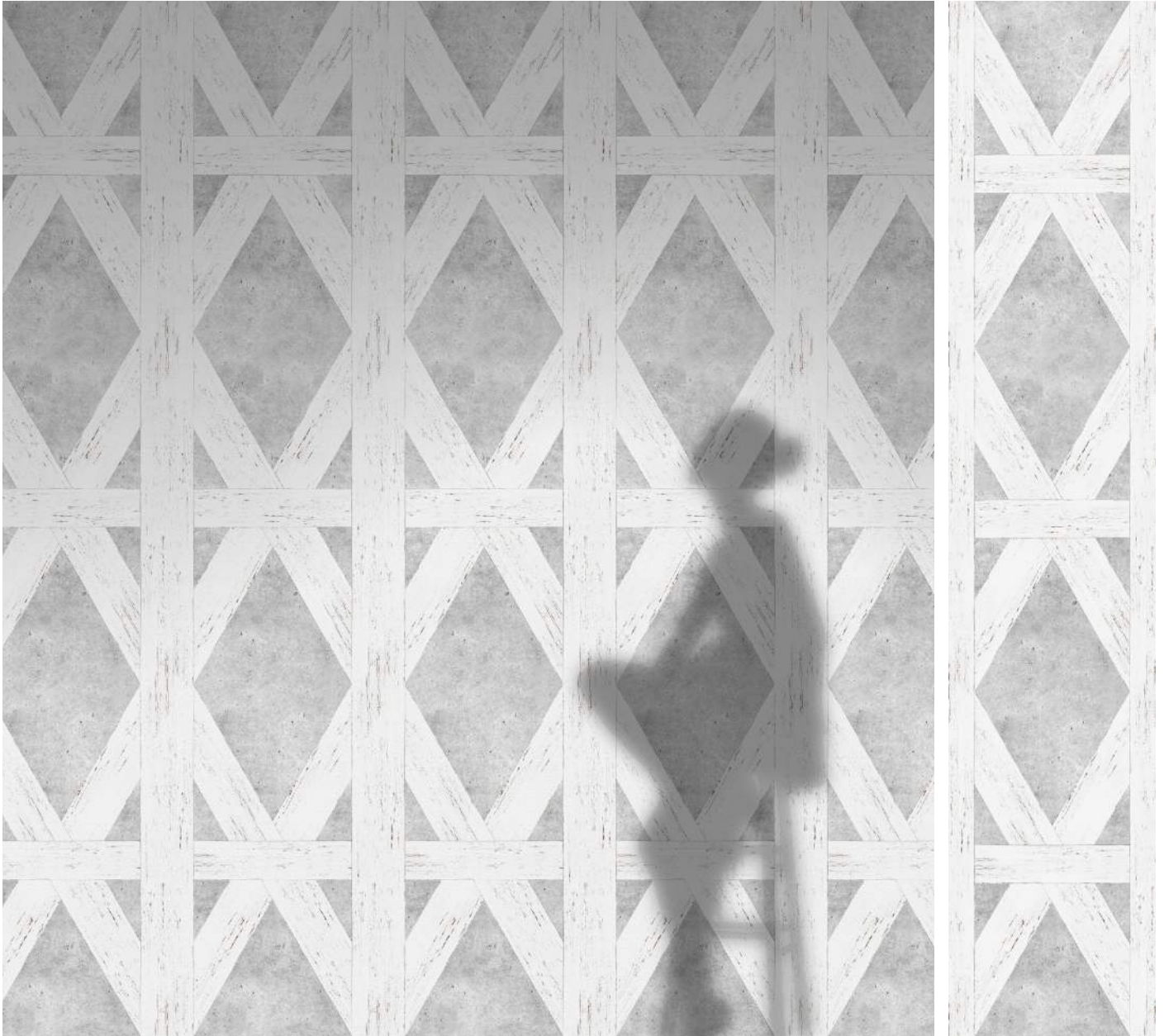
Domestic



**URBAN CONCRETE POLKADOT WALLPAPER**  
**LIGHT & DARK**  
Design by Young & Battaglia  
Made in England

Specifications:  
500 x 2500mm  
Pattern details: 2500mm pattern repeat  
180g smooth paper

Use:  
Domestic



## WHITE TUDOR WALLPAPER

Design by Young & Battaglia  
Made in England

Specifications:  
500 x 2500mm

Pattern details: pattern alignment 833mm, pattern repeat 2500mm (no repeat)  
180g smooth paper

Use:  
Domestic