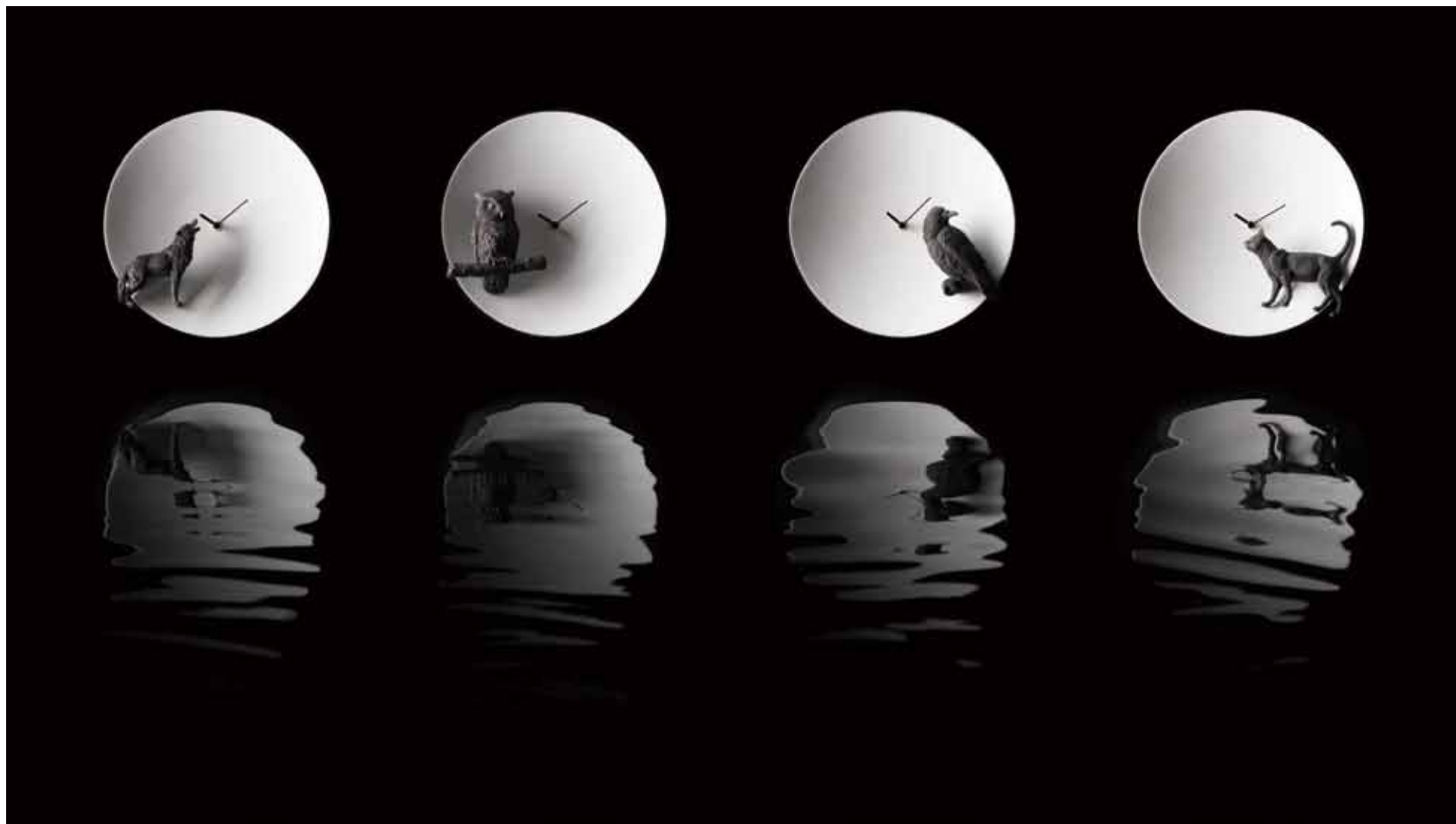




haoshi design 良事設計

www.haoshi.com.tw

Moon X CLOCK





Moon X CLOCK

Wolf, Owl, Raven, Cat

Dimensions

250mm X 250mm X 60mm

Material

Resin / Taiwan movement

When the night falls, in the darkness of quiet and still, the nocturnal animals are exulting in exploring this world. The moonlight energizes the animals, and the moon is the faith they rely on. The story of them is quietly running on this tranquil land. Are you those people who always find inspiration at night? The later at night it gets, the more ideas you have? If you are this kind of nocturnal animal, let haoshi Moon Clock warm you up at every single night.



Goldfish X CLOCK

Dimensions

650mm X 650mm X 100mm

Material

Resin / Taiwan movement / Handmade

haoshi Goldfish Clock collects nine leisurely swimming goldfish. In the Eastern culture, number “nine” means flourishing fortune; the goldfish represents lucky and rich. The nine goldfish is a symbol of permanent good fortune and luck.

Goldfishes swim freely with their beautiful long tails, in gestures of delicacy and elegance. They swim with no rush; they swim away from all earthly noise. Their elegant rhythm freezes the moment into forever. On haoshi Goldfish Clock floats both passing time and static goldfish. As time goes by, shadows dance and change underneath the sun. Between move and still, reality and dream, the goldfish clock would record the happiness with you in ever single second.



Goldfish X PAPERWEIGHT

Dimensions

130mm X 80mm X 45mm

Material

Resin / Handmade

Goldfish is a delightful creature in both East and West. haoshi Goldfish Paperweight shows the elegant gesture when goldfish swims freely in a pond. Through old sculpture master's hand, it vividly displays multiple layers of fish scales and clean arc of a goldfish shape. haoshi Goldfish Paperweight is colored in sumptuous gold, and it will breathe abundant energy into your desk.



Swallow X CLOCK

Dimensions

600mm X 600mm X 120mm

Material

Resin / Taiwan movement / Handmade

Featuring the swallow clock with 12 delicate flying swallows to replace the boring numbers in ordinary clock. Even the time wait for no one but the flying swallow will stop to enjoy the moment. Marrying the two aesthetics of movement and silent to create this masterpiece of swallow clock. Although time flies like the birds, but capturing every moment and seize the day will make life fly beautifully as these swallows towards a better tomorrow. Swallow symbolizes luck and hope, may this clock give you the wings of good fortune and make you fly up high in life.



Balloon X LAMP

Dimensions

320mm X 205mm X 130mm

Material

Lighting / Plastic / Iron frame shoring

Remember in childhood we were so excited and delighted when holding a balloon in our hands? However, it brought only temporary happiness; we felt lonely and regretful next day when seeing the air of balloon faded away. In order to remind people of childhood sweet memory, haoshi's balloon lamp is always there to light you up. The balloon and light represent hope and warmth, haoshi combines the bright side of these two and designed a wall lamp of balloon shape. haoshi balloon lamp will awake everyone's innocence inside, a beam of light, a stream of warmth, a flying of a balloon, a ray of hope.



Kite X LAMP

Dimensions

540mm X 650mm X 180mm

Material

Lighting / Plastic / Iron frame shoring

The kite is a way to connect us human beings and the sky. Just imagine a crowd of children chasing the kite. They rush for the kite with so much enthusiasm. Such eagerness is like parents' expectation for their own children – fly far and high. Because of the kite, we learn how to interact with the sky. The kite string passes down the strength that amazes us. When the string snaps, we think the kite will uprise high into the cloud with the wind. It will approach the sun, the moon and the stars. We comfort ourselves by seeing kite string snapping as a sign of blessing, and which seems to be a naïve idea now. Childhood is always amusing. We never forget our ability to imagine, and thus we keep the sweet memory.

haoshi designed the kite light with simple a diamond shape. It provides the easiest way to light up the corner for adults and children. They could take a short break at that corner, browse a book, put things in order, or recall memories. The kite string in our mind will take us fly around agai



Little space X Kitchen Paper Towels

Dimensions

155mm X 155mm X 230mm

Material

Resin

The annual growth ring in the trunk of a tree. When you are using paper, also consume the natural resources. The designer takes environmental friendly of attitude to reflect on the performance





Merry go round X CLOCK

Dimensions

153mm X 153mm X 170mm

Material

Resin / Plastic / Japan SKP movement

Memory fades away. As time goes by, memory will move on with us, and it is just being forgotten....

haoshi Design connects time and memory by Merry-Go-Round. "Happiness" is the immediate feeling; however, "the memory of happiness" will extend to the infinity as time goes by. We therefore insert the element of time in this carousel. A boy moves vigorously just like the second hand. The minute hand symbolizes a mother, who keeps company with her child. The hour hand is like a father who steadily guards his family. The close relationships and interactions between them transform into the flow of time.

Merry-Go-Round is the most spectacular and classic facility in the amusement park. It seems like the carousel is spinning around in the same spot, but the happy memory we derive from it will never stop moving forward.

User Guide

Boy on the cockhorse is the second hand

Mother on the cockhorse is the minute hand

Father on the cockhorse is the hour hand

The numbers on the Rome pillars represent time

Merry-go-round SERIES

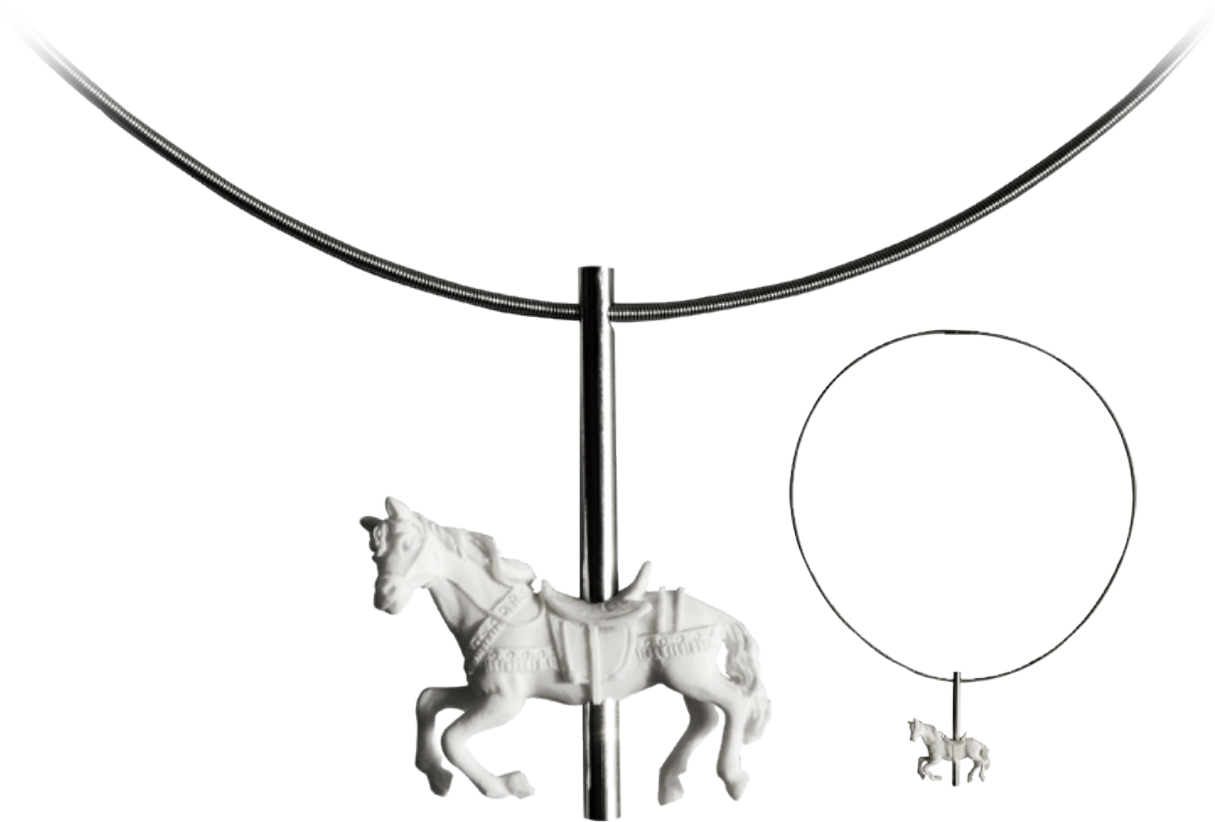
Single X NECKLACE

Dimensions

35mm X 9mm X 45mm

Material

Resin / Metal / Handmade





Merry-go-round SERIES

Twining X NECKLACE

Dimensions

39mm X 25mm X 95mm

Material

Resin / Metal / Handmade





Merry-go-round SERIES

Merry-go-round X BROOCH

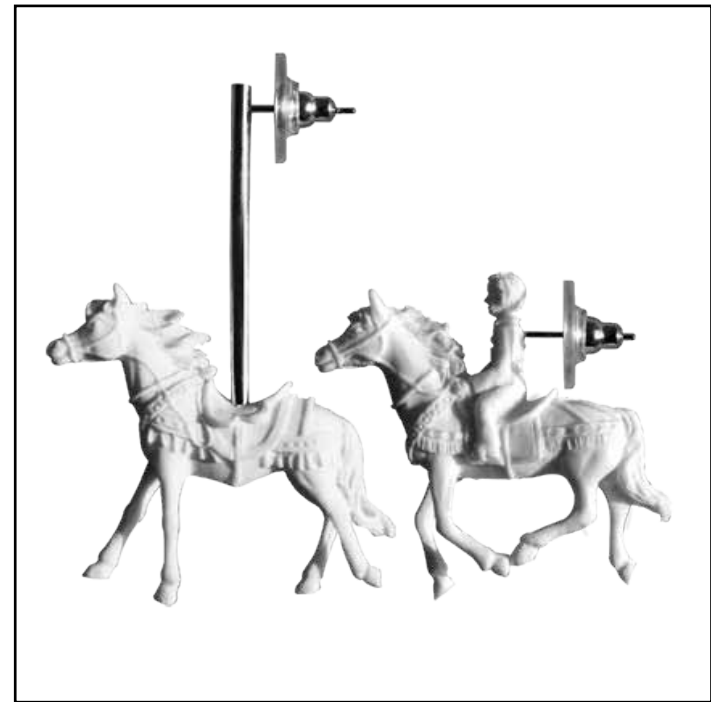
Dimensions

37mm X 6mm X 54mm

36mm X 6mm X 34mm

Material

Resin / Metal / Handmade





Merry-go-round SERIES

Merry-go-round X BROOCH

Dimensions

34mm X 10mm X 90mm

Material

Resin / Metal / Handmade





Silhouette SERIES

Two Brid X NECKLACE

Dimensions

205mm X 220mm

Material

PVC

In the world that face and cleavage is the main focus that people looks at. Hoshi Design saw the hidden beauty in between them and taking this opportunity to reveal the beauty with our silhouette necklace.

This integral silhouette necklace is made of PVC materials and with the kiss of simplicity on the buckle design. The stunning design of this necklace just likes a beautiful lipstick on the soft neck. Let's dance like a bird in a wonderful musical and never miss any spotlight with this amazing necklace.



haoshi Design Studio



Silhouette SERIES

Birds X NECKLACE

Dimensions

210mm X 220mm

Material

PVC

In the world that face and cleavage is the main focus that people looks at. Hoshi Design saw the hidden beauty in between them and taking this opportunity to reveal the beauty with our silhouette necklace.

This integral silhouette necklace is made of PVC materials and with the kiss of simplicity on the buckle design. The stunning design of this necklace just likes a beautiful lipstick on the soft neck. Let's dance like a bird in a wonderful musical and never miss any spotlight with this amazing necklace.



haoshi Design Studio



Silhouette SERIES

Fish X NECKLACE

Dimensions

220mm X 205mm

Material

PVC

In the world that face and cleavage is the main focus that people looks at. Hoshi Design saw the hidden beauty in between them and taking this opportunity to reveal the beauty with our silhouette necklace.

This integral silhouette necklace is made of PVC materials and with the kiss of simplicity on the buckle design. The stunning design of this necklace just likes a beautiful lipstick on the soft neck. Let's dance like a bird in a wonderful musical and never miss any spotlight with this amazing necklace.



haoshi Design Studio



Silhouette SERIES

Migratory bird X NECKLACE

Dimensions

215mm X 220mm

Material

PVC

In the world that face and cleavage is the main focus that people looks at. Hoshi Design saw the hidden beauty in between them and taking this opportunity to reveal the beauty with our silhouette necklace.

This integral silhouette necklace is made of PVC materials and with the kiss of simplicity on the buckle design. The stunning design of this necklace just likes a beautiful lipstick on the soft neck. Let's dance like a bird in a wonderful musical and never miss any spotlight with this amazing necklace.



haoshi Design Studio



Silhouette SERIES

Vine X NECKLACE

Dimensions

225mm X 250mm

Material

PVC

In the world that face and cleavage is the main focus that people looks at. Hoshi Design saw the hidden beauty in between them and taking this opportunity to reveal the beauty with our silhouette necklace.

This integral silhouette necklace is made of PVC materials and with the kiss of simplicity on the buckle design. The stunning design of this necklace just likes a beautiful lipstick on the soft neck. Let's dance like a bird in a wonderful musical and never miss any spotlight with this amazing necklace.



haoshi Design Studio



Animal SERIES

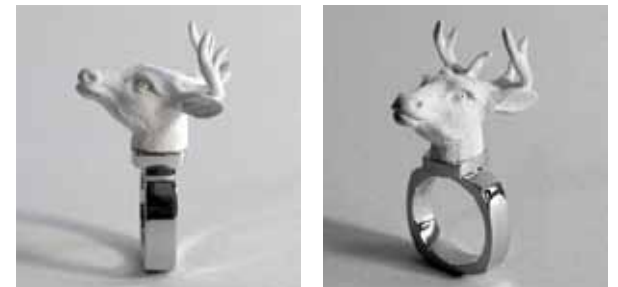
Bucks X RING

Pig X RING / Polarbear X RING / Cat X RING / Giraffe X RING

Material

Metal / Resin / Handmade

A series of animals in the city can represent the emotions of urban people. Every animal has its habitual behaviors and stories. It's interesting that human have complicated thinking and all kinds of living environments. While we are proud of being the leader of creatures, it is also interesting that many people's behaviours act like the animals. So, why not choose an animal to represent yourself! It will be your best friend, and always stands by you.





Animal SERIES

Rabbit X RING

Wolf X RING / Tiger X RING / Sheep X RING / Rae X RING

Material

Metal / Resin / Handmade

A series of animals in the city can represent the emotions of urban people. Every animal has its habitual behaviors and stories. It's interesting that human have complicated thinking and all kinds of living environments. While we are proud of being the leader of creatures, it is also interesting that many people's behaviours act like the animals. So, why not choose an animal to represent yourself! It will be your best friend, and always stands by you.



Animal SERIES

Crocodile X 2RING

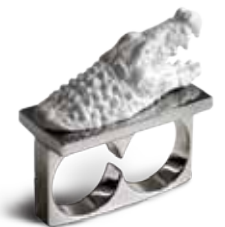
Dimensions

40mm X 17mm X 41mm

Material

Metal / Resin / Handmade

We put a kind of purity and peace into our design concept. The carve of animals' emotions, and accurate calculate every angle...they are represent our conscientiousness to life, and perfect demand. We use concrete exquisite technical art to express abstract life concept. In the visual art, you can see what the designers want to express their life philosophy.





Animal SERIES

Hippo X 2RING

Dimensions

38mm X 17mm X 42mm

Material

Metal / Resin / Handmade

We put a kind of purity and peace into our design concept. The carve of animals' emotions, and accurate calculate every angle...they are represent our conscientiousness to life, and perfect demand. We use concrete exquisite technical art to express abstract life concept. In the visual art, you can see what the designers want to express their life philosophy.





Animal SERIES

Animal X NECKLACE

Material

Silver / Resin / Handmade



A series of animals in the city can represent the emotions of urban people. Every animal has its habitual behaviors and stories. It's interesting that human have complicated thinking and all kinds of living environments. While we are proud of being the leader of creatures, it is also interesting that many people's behaviours act like the animals. So, why not choose an animal to represent yourself! It will be your best friend, and always stands by you.





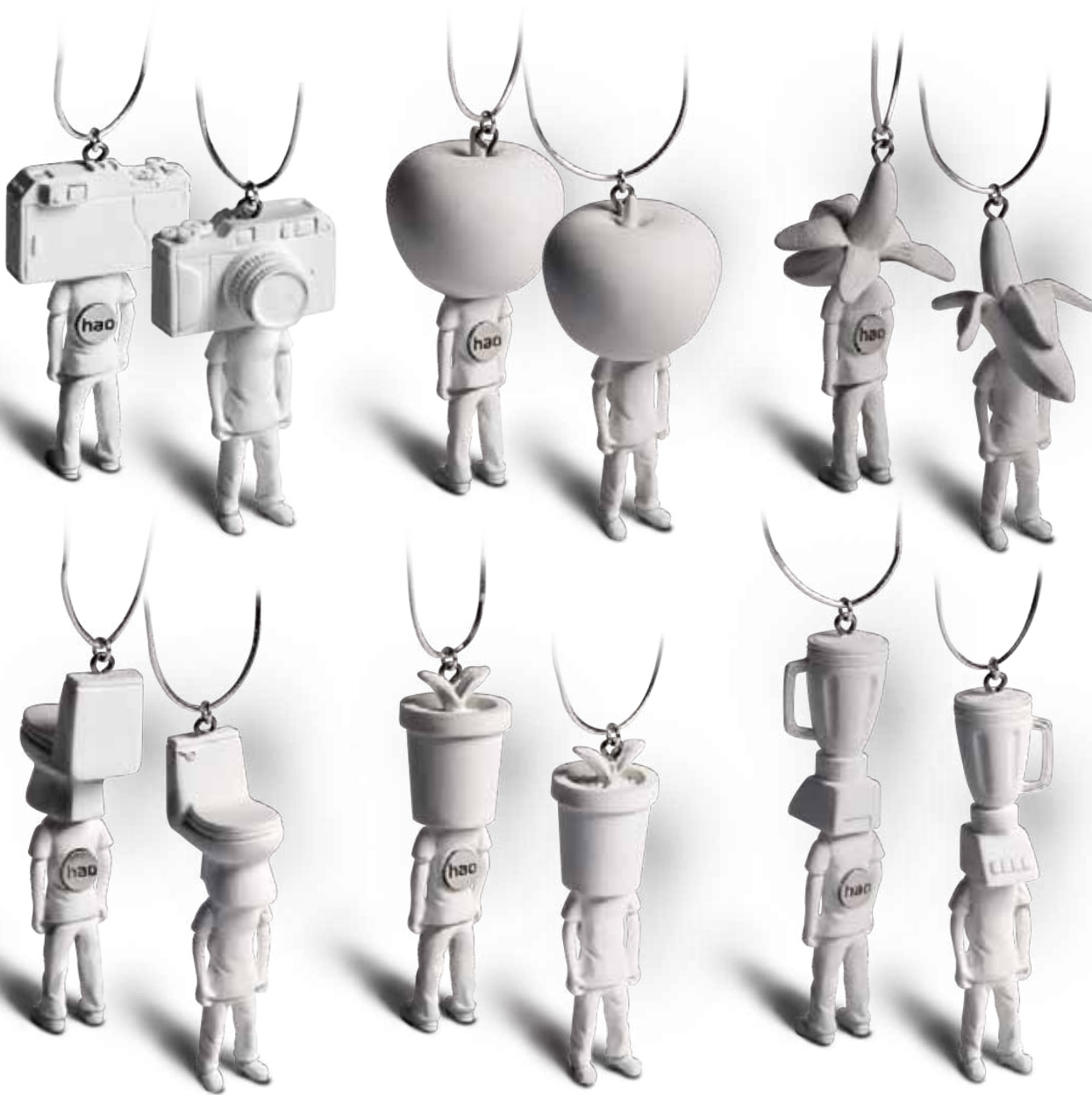
Animal SERIES

Animal X NECKLACE

Material

Silver / Resin / Handmade

A series of animals in the city can represent the emotions of urban people. Every animal has its habitual behaviors and stories. It's interesting that human have complicated thinking and all kinds of living environments. While we are proud of being the leader of creatures, it is also interesting that many people's behaviours act like the animals. So, why not choose an animal to represent yourself! It will be your best friend, and always stands by you.



Dress SERIES
NECKLACE

Material

Silver / Resin / Handmade

Humorous costume series, created by haoshi DESIGN, a tiny stuff in our daily life, might look small but it can increase your taste and bring you a touch of feeling. Observe daily things with humor and passion, an apple or a camera can make us happy and you can forget to bring your key, purse and phone to your office but do not forget to bring your haoshi humorous costume.



Dress SERIES
NECKLACE

Material

Silver / Resin / Handmade

Humorous costume series, created by haoshi DESIGN, a tiny stuff in our daily life, might look small but it can increase your taste and bring you a touch of feeling. Observe daily things with humor and passion, an apple or a camera can make us happy and you can forget to bring your key, purse and phone to your office but do not forget to bring your haoshi humorous costume.